

Complete Field-to-Finish IN THE FIELD!

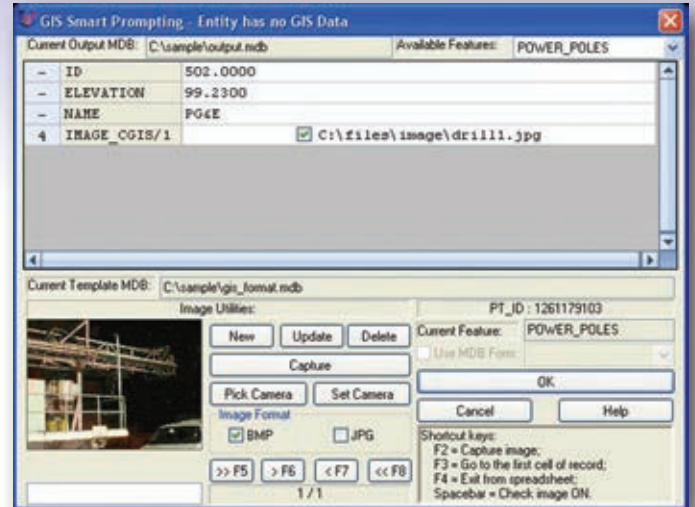
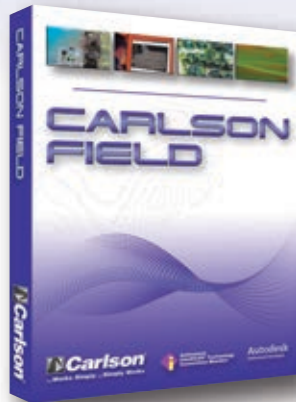
CARLSON FIELD

- FULL DATA COLLECTION INSIDE CAD

Here's real-time kinematic GPS and total station data collection directly in CAD*

- See what you're collecting; zoom in and out, or pan over
- Perform basic COGO (inverse, traverse, sideshot, bearing-bearing intersect) or high-level CAD (inscribe arcs, layout lots, offset polylines) operations and everything in between
- Stakeout building corners, lot corners or any CAD feature by "snapping" to the CAD entity - and all this without creating point numbers
- Plot all field data collected in the DWG/DXF format
- Plot points, add text, check contours, all in the field
- Perform grade checking on board sites, stakeout specific points for elevation difference, plus take spot shots and compare the shots against a grid or triangulation (TIN) file
- Use digital photos when collecting data
- NEW! Option for direct and reverse shots.
- Collect feature attributes into the GIS database
- Works with depth sounders and laser range finders in addition to GPS receivers and both conventional and robotic total stations.

*On small, ruggedized PC/laptop computers



Collect data associated with valves, manholes, power poles and other standard GIS elements (just create the file containing the prompting in advance).

Carlson Field works with most instruments:

- RTK Network support, including NTRIP, SpiderNET, and generic TCP/IP and UDP/IP
- Generic NMEA Depth Sounder driver
- Topcon (800/8000/9000/QS Total Stations, GR-3, HiPer Ga, HiPer Gb, HiPer XT, HiPer Pro, HiPer Lite+, HiPer Lite, HiPer+, HiPer GGD, HiPer GD, GB Series, Odyssey, and Legacy)
- APS (Astrum, Astrum Duo, Argent)
- Navcom (RT-3010S, RT-3020S, RT-3020M, NCT-2030M, SF-2040G, SF-2050G, SF-2050M, NCT- 2000 Series)
- John Deere (Starfire ITC, GreenStar)
- DataGrid (JSMk3)
- Septentrio (PolaRx2e, PolaRx2eH, PolaRx3e, AstraRx2)
- In addition to: Ashtech/Magellan/Thales GPS, NMEA GPS, Leica 500/1200/TPS Series, Nikon 300/400/500 Series, Geodimeter/Trimble 5600



Find Out More NOW!
Call or visit Carlson Software:
800-989-5028 • www.carlsonsw.com

Autodesk®
Authorized Developer

**Authorized
IntelliCAD®
Technology
Consortium
Member**

Free Technical Support
By Phone, Email, and Web

Carlson®
...For the Total Project